



9201/177-219 Mitchell Road Erskineville NSW

2  2  1 

Set within a lush resort style setting, this unfurnished two bedroom apartment features an open plan layout with a desirable North facing aspect & private leafy surrounds.

Light filled open plan lounge & dining area
Gas kitchen w stainless steel appliances
Master bedroom w walk-in robe & ensuite
Spacious second bedroom w balcony access
Bathroom w tub & separate laundry w dryer
North facing balcony w private leafy outlook
Secure car space & ample visitor parking

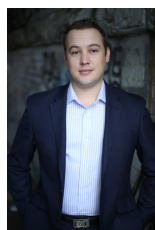
Sitting on the fringe of Sydney's inner west and inner city, its popular location is 5km from the CBD, 5-minute walk to St Peters station or 10-minute walk to Erskineville station

[For full version visit the website](https://www.parkproperties.com.au/lease/nsw/inner-west/erskineville/residential/apartment/8185241)

Type : Apartment

Price : \$800

View : <https://www.parkproperties.com.au/lease/nsw/inner-west/erskineville/residential/apartment/8185241>



Beau McCaffery
02 9565 5333