




**9501/177-219 Mitchell Road Erskineville NSW**

2  2  1 

Set within a lush resort style setting, this renovated contemporary apartment w/ 88sqm on the title is bathed in natural light & ready to occupy. With a convenient central location, cafés, restaurants, parks, and transport directly into the city centre are a short walk away. Great for first home buyers or investors.

Double brick & quality building  
Open plan living & dining area w/ floor-to-ceiling glass  
Private North facing balcony w/ leafy outlook  
Updated gas kitchen w/ s/s appliances (no separate gas bill in this SP)  
Master bedroom w/ walk in wardrobe & ensuite  
Spacious second bedroom w/ balcony access  
Main bathroom w/ tub & separate laundry

[For full version visit the website](https://www.parkproperties.com.au)

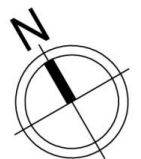
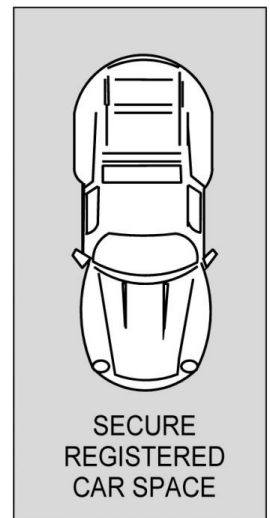
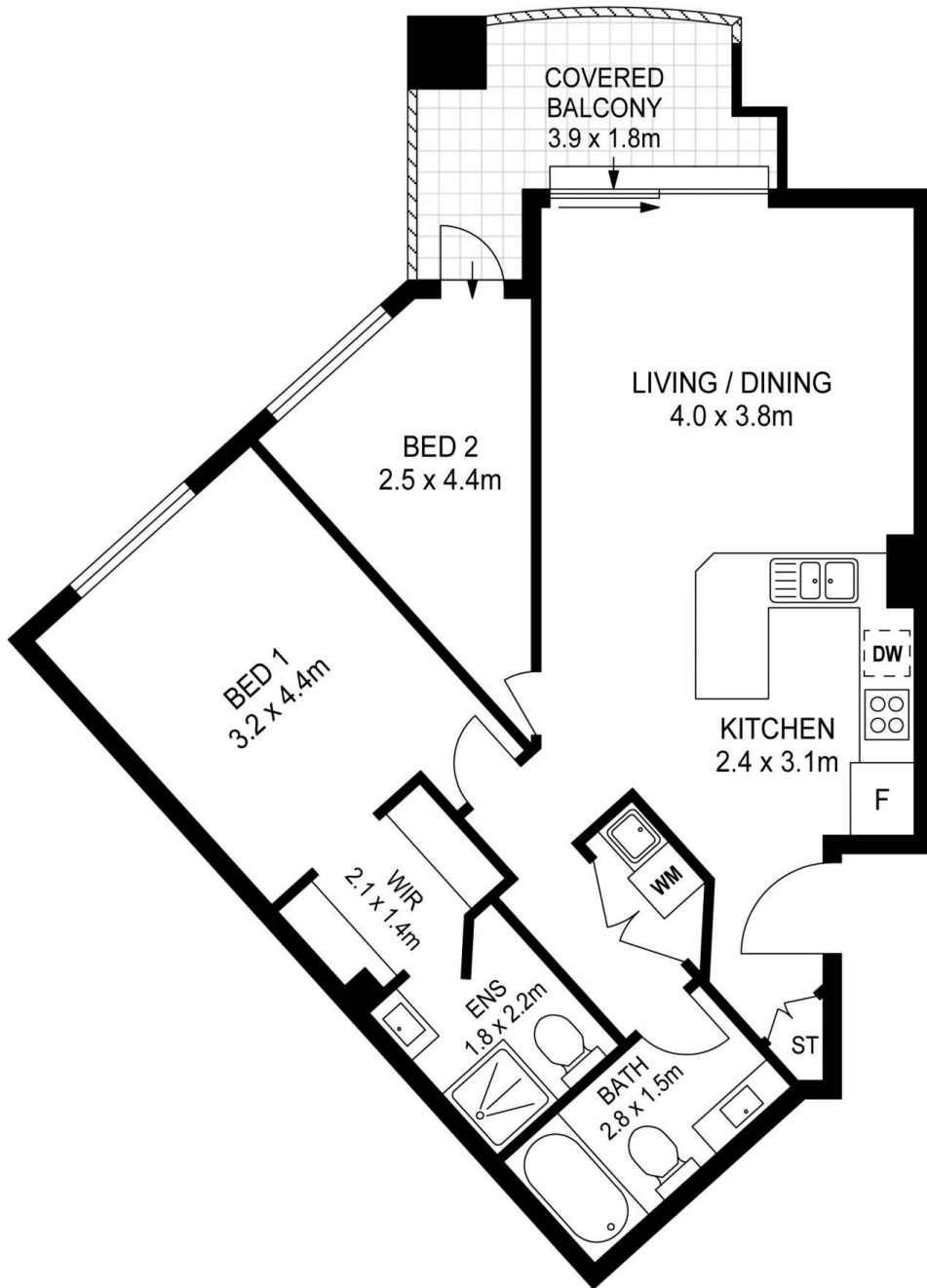
**Type** : Apartment  
**Price** : Auction  
**Building Size** : 88 sqm  
**Land Size** : 88 sqm  
**View** : <https://www.parkproperties.com.au/sale/nsw/inner-west/erskineville/residential/apartment/8168150>



**Melissah McCaffery J P**  
02 9565 5333



**Michael McCaffery**  
02 9565 5333



9501 / 177 - 219 Mitchell Road, Erskineville

**Disclaimer**

Floor plan measurements are approximate and are for illustrative purposes only. While we cannot doubt the floor plans accuracy, we make no guarantee, warranty or representation as to the accuracy and completeness of the floor plan