



1207/177-219 Mitchell Road Erskineville NSW

1  1  1 

Generous in size, this one bedroom apartment with secure parking is located within the sought after lifestyle complex Sydney Park Village. Located on the second floor with an ideal light filled aspect, this apartment offers ultimate convenience with a cosmopolitan lifestyle address.

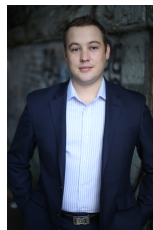
Light filled open plan lounge & dining area
Gas kitchen w stainless steel appliances
Large bedroom w built-in wardrobes
Balcony w leafy complex views
Bathroom w tub & internal laundry w dryer
Security complex w lift & intercom access
Secure car space & ample visitor parking

Sitting on the fringe of Sydney's inner west and inner city,

[For full version visit the website](https://www.parkproperties.com.au/lease/nsw/inner-west/erskineville/residential/apartment/809878)

Type : Apartment

View : <https://www.parkproperties.com.au/lease/nsw/inner-west/erskineville/residential/apartment/809878>



Beau McCaffery
02 9565 5333