



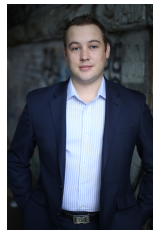
7306/177-219 Mitchell Road Erskineville NSW

1  1  1 

Offering sophistication & tranquillity amid Erskineville's vibrant lifestyle precinct, this tastefully renovated haven is nestled within the acclaimed Sydney Park Village complex promises an idyllic urban lifestyle.

View : <https://www.parkproperties.com.au/lease/nsw/inner-west/erskineville/residential/apartment/8091912>

- Generous open plan living & dining area
- Sleek kitchen w stainless steel gas appliances
- Light filled balcony w leafy complex views
- Well-appointed bedroom w walk-in wardrobe
- Chic bathroom & internal laundry w washer/dryer
- Air conditioning & ample storage space
- Secure car space & ample visitor parking



Beau McCaffery
02 9565 5333

Sitting on the fringe of Sydney's inner west and inner city, its popular location is 5km from the CBD, 5 minute walk to St Peters station or 10 minute walk to Erskineville station and located directly across from the 2020 Architizer A+