



6206/177-219 Mitchell Road Erskineville NSW

2  2  1 

Situated in the front stage of the development & boasting a 10m wide frontage, this apartment delivers endless lifestyle appeal in a vibrant resort-style setting. Presenting an open plan layout w/ light filled & updated interiors throughout, enjoy low maintenance living coupled with Inner West's most coveted conveniences - the ideal sanctuary for young couples, families or downsizers looking for effortless living in a tightly held resort style community.

Double brick & quality building
Large in/outdoor living area which flows seamlessly into the spacious courtyard
Floor to ceiling glass sliding doors enabling an abundance of light
Renovated gas kitchen w/ s/s appliances & loads of storage (free gas in this strata plan)
Large low maintenance 10m wide courtyard ideal for

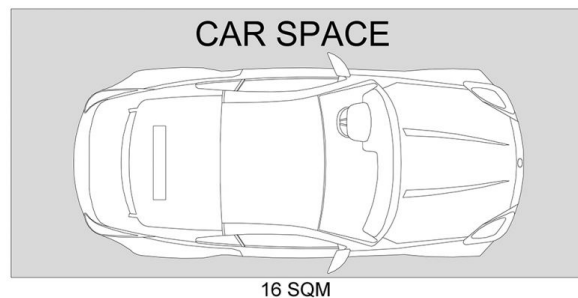
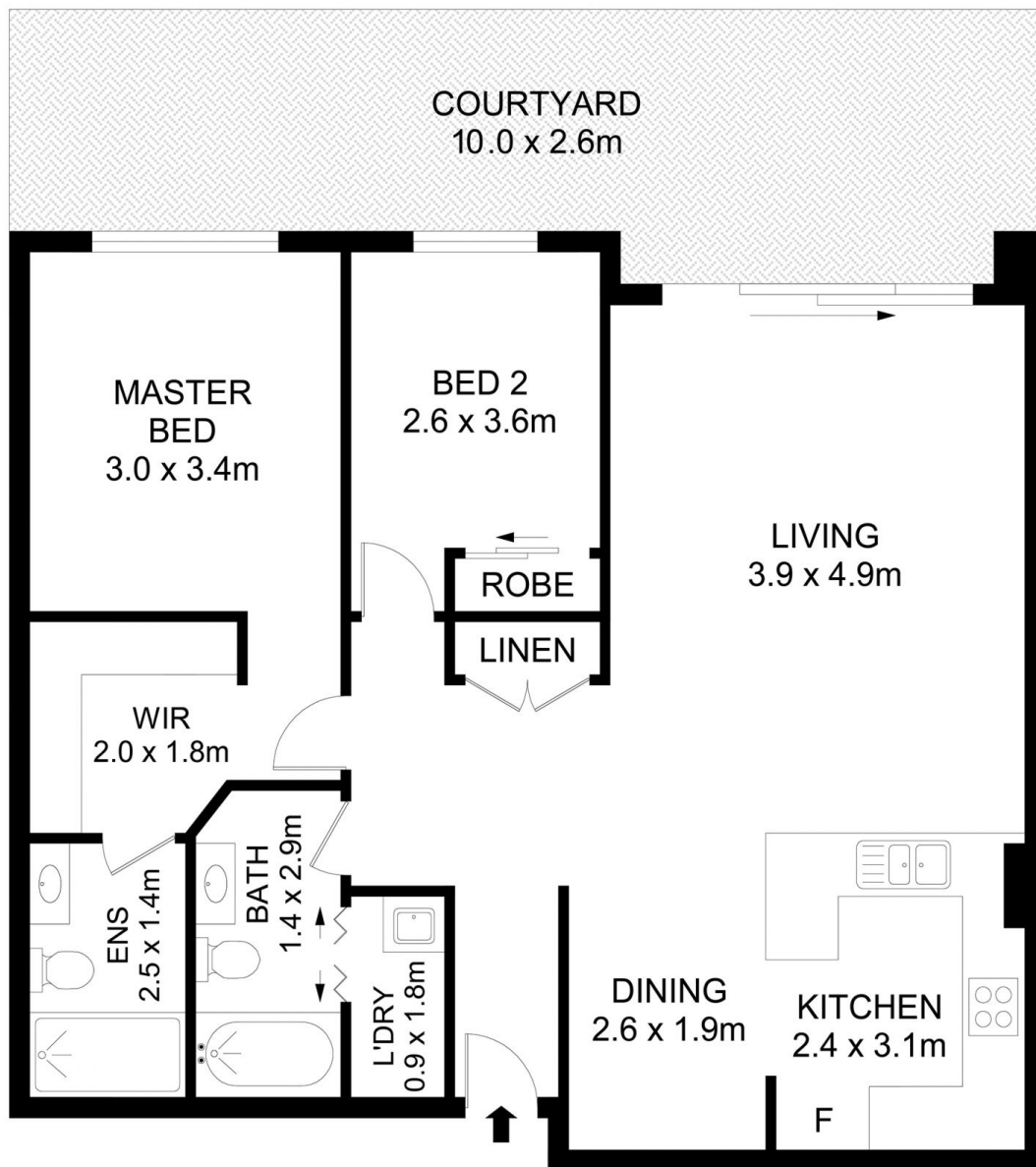
Price : \$ 1,165,000
Land Size : 117 sqm
View : <https://www.parkproperties.com.au/sale/nsw/inner-west/erskineville/residential/apartmen/8035462>



Melissah McCaffery J P
02 9565 5333



Michael McCaffery
02 9565 5333



Disclaimer

Floor Plan measurements are approximate and are for illustrative purposes only. While we cannot doubt the floor plans accuracy , we make no guarantee , warranty or representation as to the accuracy and completeness of the floor plan

