



**17512/177-219 Mitchell Road Erskineville NSW**

1  1 

Situated in the sought-after landmark 'Sydney Park Village' is this bright & spacious internal facing apartment featuring an open plan layout w/ views over the landscaped gardens, swimming pools and tennis courts. Immerse yourself in an effortless urban lifestyle, perfect for the savvy investor or couple that demands quality without compromise.

**Price** : \$ 680,000  
**Building Size** : 65 sqm  
**View** : <https://www.parkproperties.com.au/sale/nsw/inner-west/erskineville/residential/apartment/8031439>

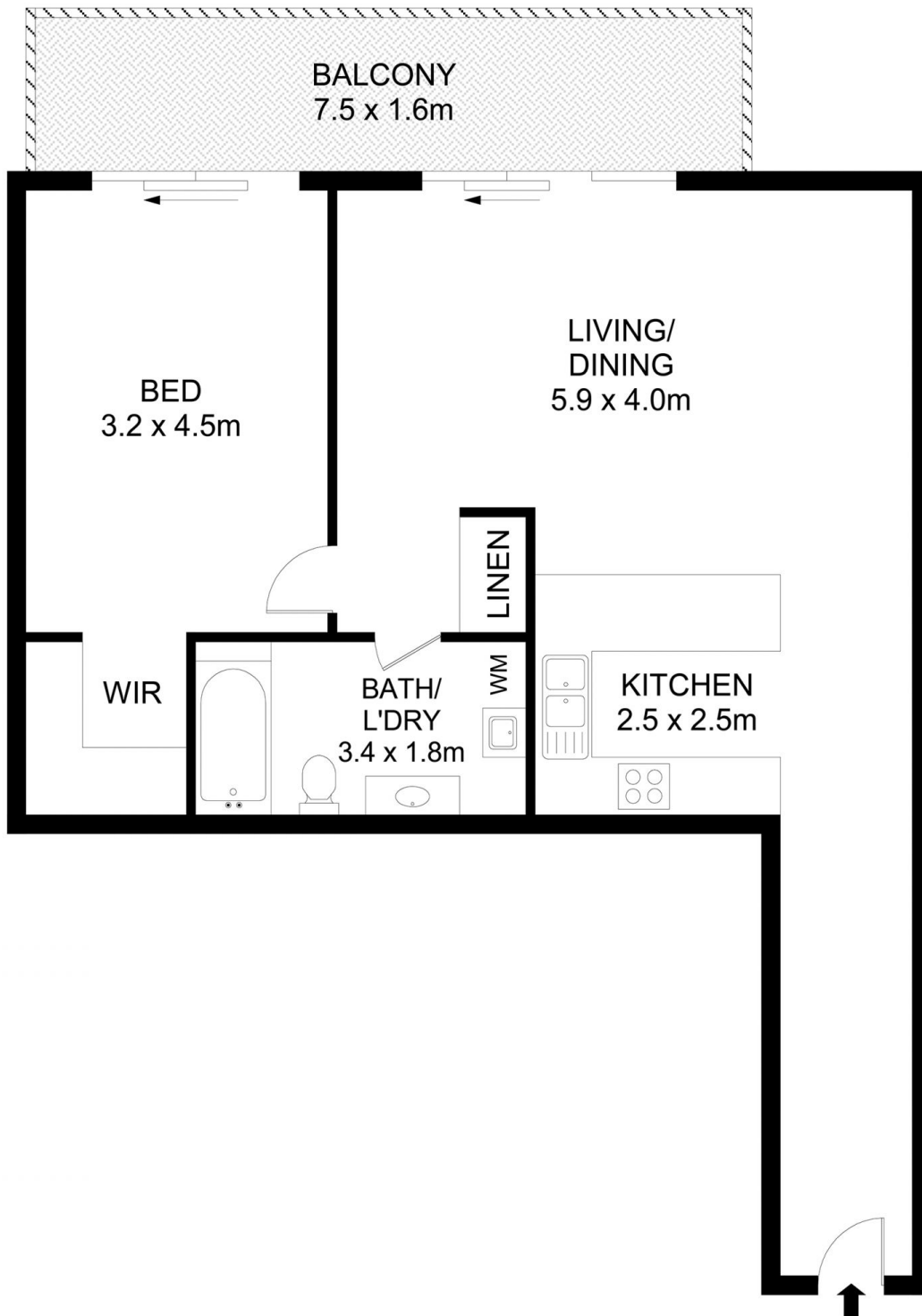
Double brick & quality building  
 Floor to ceiling glass sliding doors enabling an abundance of natural light  
 Spacious open plan lounge & dining area  
 Large bedroom w/ walk in robe & direct balcony access  
 Designer gas kitchen w/ dishwasher & breakfast bar  
 Stylish bathroom w/ tub & internal laundry w/ dryer  
 Full width entertainers' balcony w/ leafy outlook & complex views  
 Intercom access, resort style facilities w/ 24 hour security



**Michael McCaffery**  
02 9565 5333



**Melissah McCaffery J P**  
02 9565 5333



17512/177-219 Mitchell Road, Erskineville

**Disclaimer**

Floor Plan measurements are approximate and are for illustrative purposes only. While we cannot doubt the floor plans accuracy, we make no guarantee, warranty or representation as to the accuracy and completeness of the floor plan

