



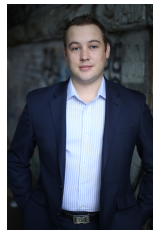
**15202/177-219 Mitchell Road Erskineville NSW**

1  1  1 

Designed for laid back urban living, this internal east facing one bed plus study apartment features a great entertainers layout with views over the complex facilities and manicured gardens.

**View** : <https://www.parkproperties.com.au/lease/nsw/inner-west/erskineville/residential/apartment/8015721>

Light filled open plan lounge & dining area  
Designer gas kitchen w stainless steel appliances  
Spacious bedroom w built-in robes & balcony access  
Full length entertainers balcony w leafy complex views  
Stylish bathroom w tub & internal laundry w dryer  
Separate study area perfect for home office  
Secure car space & ample visitor parking



**Beau McCaffery**  
**02 9565 5333**

Sitting on the fringe of Sydney's inner west and inner city, its popular location is 5km from the CBD, 5 minute walk to St Peters station or 10 minute walk to Erskineville station and located directly across from the 2020 Architizer A+