



**604/241-245 Sydney Park Road Erskineville NSW**

2  2  1 

This stunning 108 sqm two-bedroom apartment, perched on level 6, boasts a sought-after Northerly aspect and a coveted corner position, offering city views. The generous, open-plan layout features modern interiors and is bathed in natural light, creating a bright and inviting living space. Enjoy the ease of an effortless lifestyle with unparalleled convenience, including proximity to the vibrant Sydney Park, Erskineville Village, and the eclectic shopping strip of Newtown. With excellent transport options just moments away, this apartment promises both comfort and accessibility right at your doorstep.

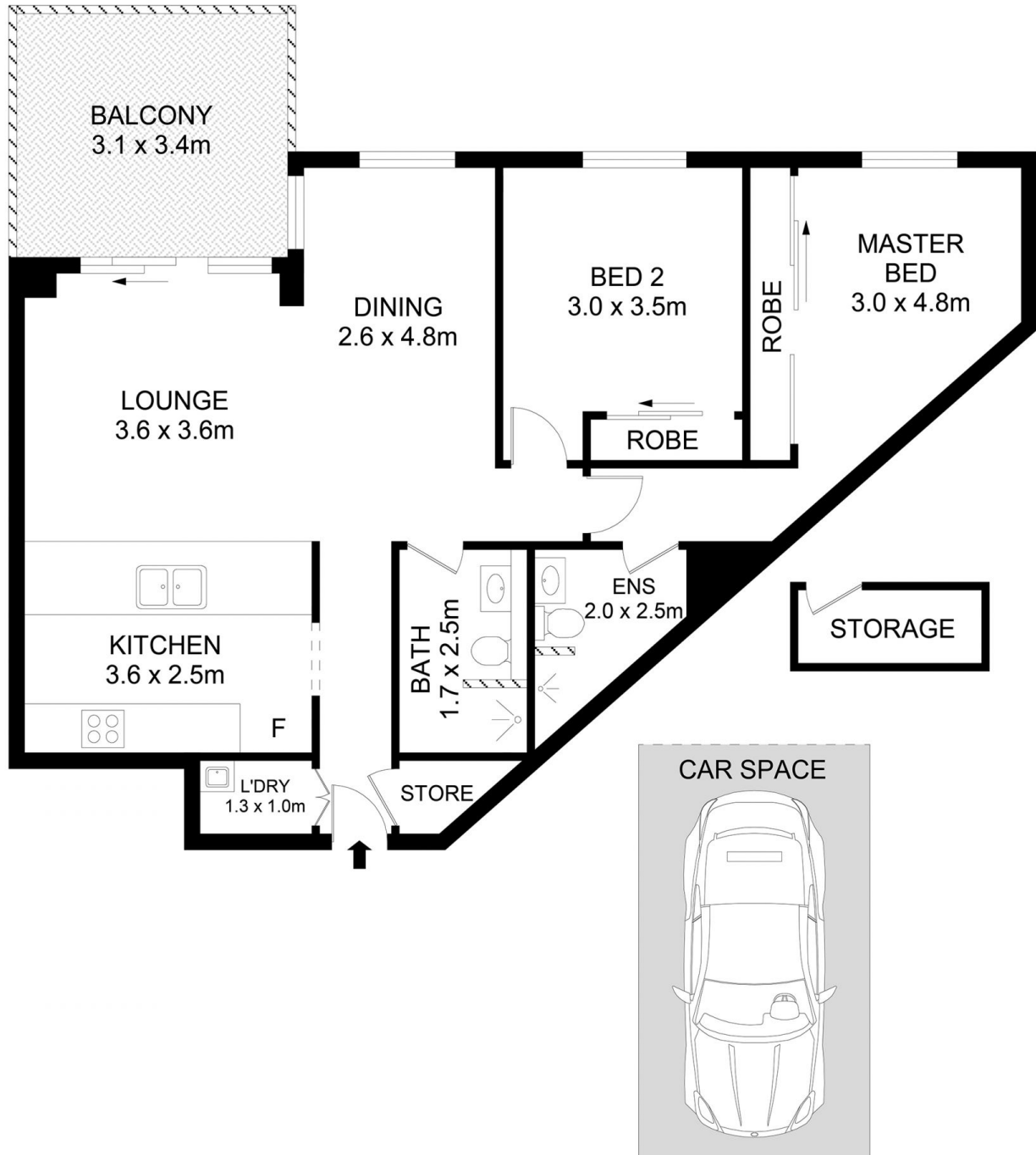
Floor to ceiling glass sliding doors enabling an abundance of natural light  
Bright, sunlit private terrace w/ district & city views

[For full version visit the website](https://www.parkproperties.com.au)

<b>Type</b>	: Apartment
<b>Price</b>	: Auction
<b>Building Size</b>	: 108 sqm
<b>Land Size</b>	: 108 sqm
<b>View</b>	: <a href="https://www.parkproperties.com.au/sale/nsw/inner-west/erskineville/residential/apartment/7405313">https://www.parkproperties.com.au/sale/nsw/inner-west/erskineville/residential/apartment/7405313</a>



**Michael McCaffery**  
02 9565 5333



604/241-245 Sydney Park Road, Erskineville

**Disclaimer**

Floor Plan measurements are approximate and are for illustrative purposes only. While we cannot doubt the floor plans accuracy, we make no guarantee, warranty or representation as to the accuracy and completeness of the floor plan