



9610/177-219 Mitchell Road Erskineville NSW

1  1 

SOLD OFF MARKET

Spacious sixth floor one bedroom apartment privately positioned in the desirable Sydney Park Village complex. Offering a generous floor plan + attractive internal garden views, this apartment offers ultimate convenience w/ a premium lifestyle address.

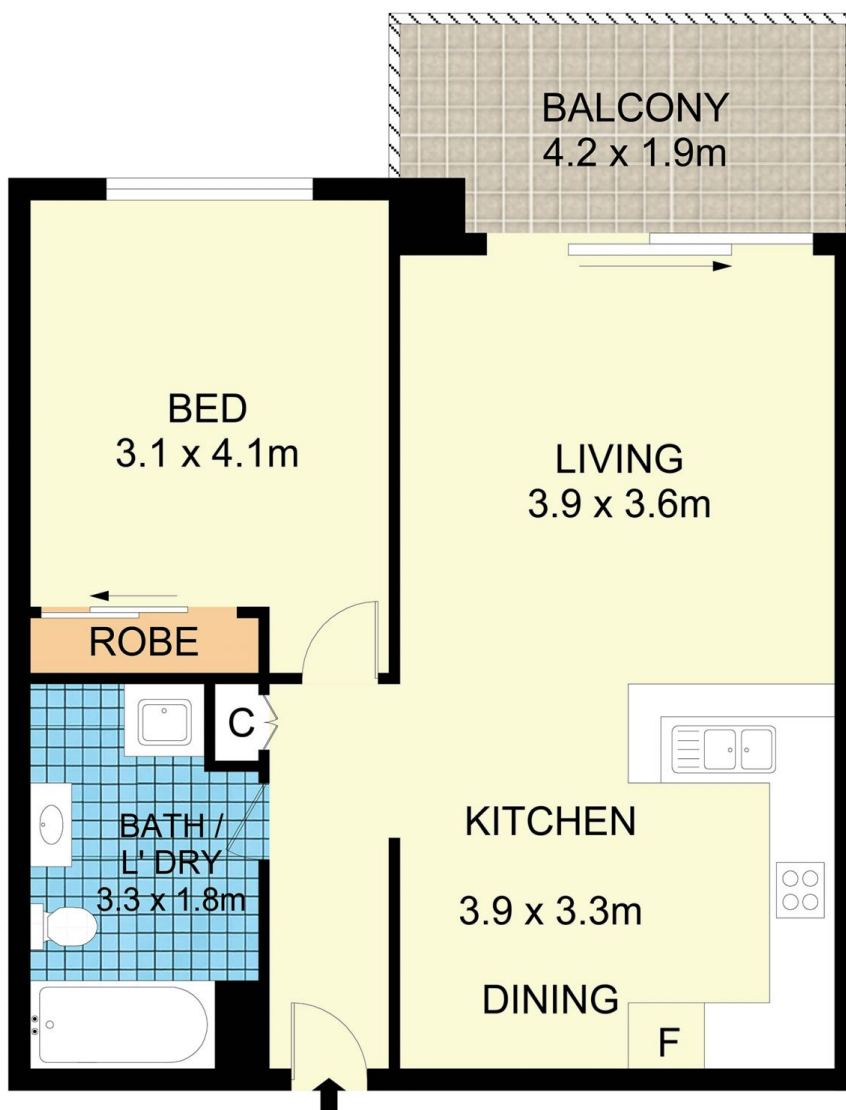
Double brick & quality building
Spacious, light filled open plan living & dining area
Floor to ceiling glass sliding doors enabling an abundance of natural light
Well-appointed gas kitchen w/ s/s appliances & plenty of storage
Generous master bedroom w/ BIR

[For full version visit the website](https://www.parkproperties.com.au)

Type : Apartment
Price : \$ 665,000
Building Size : 58 sqm
View : <https://www.parkproperties.com.au/sale/nsw/inner-west/erskineville/residential/apartment/4264110>



Melissah McCaffery J P
02 9565 5333



9610/177-219 Mitchell Road, Erskineville

Disclaimer

Floor Plan measurements are approximate and are for illustrative purposes only. While we cannot doubt the floor plans accuracy, we make no guarantee, warranty or representation as to the accuracy and completeness of the floor plan